

MARGARET PACE PARK

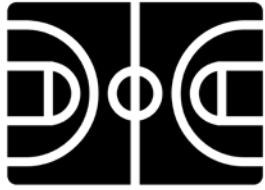
COMMUNITY WORKSHOP



November 20, 2024

WHERE WE ARE NOW

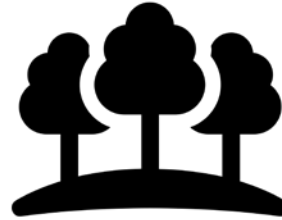
2023 OUTREACH TAKEAWAYS



SPORT COURTS



INCLUSIVITY



PRESERVATION



MAINTENANCE



SECURITY

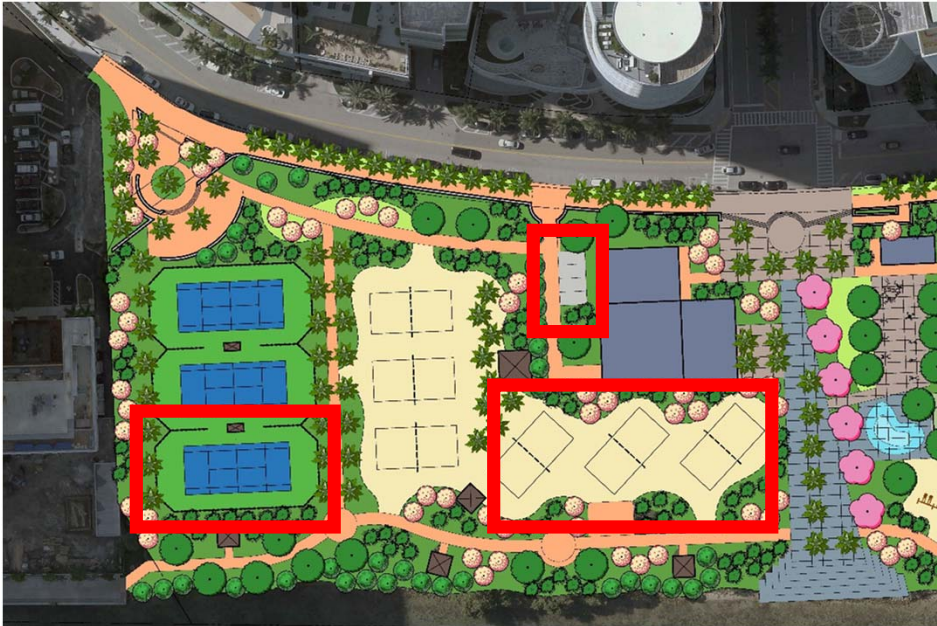


ACCESS



RESILIENCE

2023 PLAN



CURRENT PLAN



2023 PLAN



CURRENT PLAN



CURRENT CONCEPTUAL MASTER PLAN

ENGAGEMENT ACTIVITIES

- LEGEND**
- ① RENOVATED PARK ENTRANCE
 - ② EXISTING MURAL
 - ③ FITNESS AREA
 - ④ TENNIS COURT
 - ⑤ SAND VOLLEYBALL
 - ⑥ OPEN SPACE
 - ⑦ BASKETBALL COURT
 - ⑧ PICKLEBALL COURT
 - ⑨ 2-STORY PARK OFFICE WITH MAINTENANCE BAY
 - ⑩ COMMUNITY CENTER AND CONCESSIONS WITH CAFE
 - ⑪ THE GREAT LAWN
 - ⑫ MAINTENANCE ACCESS
 - ⑬ MAINTENANCE EQUIPMENT STORAGE
 - ⑭ RESTROOMS
 - ⑮ MEETING PLAZA
 - ⑯ SOCIAL STAIRS
 - ⑰ GROUP PAVILION
 - ⑱ PAVILION
 - ⑲ IPL SOLAR PAVILION
 - ⑳ IPL SOLAR TREE
 - ㉑ SPLASH PAD
 - ㉒ NATURE THEMED PLAYGROUND
 - ㉓ PLAY MOUND
 - ㉔ SCREENING
 - ㉕ PALM GROVE
 - ㉖ KAYAK LAUNCH
 - ㉗ KAYAK STORAGE
 - ㉘ DOG PARK
 - ㉙ PUBLIC ART OR MONUMENT
 - ㉚ NATIVE LOW-MAINTENANCE LANDSCAPE
 - ㉛ LIVING SHORELINE LANDSCAPE ENHANCEMENTS



BISCAYNE BAY

WHERE WE ARE HEADED

SCOPE OF WORK



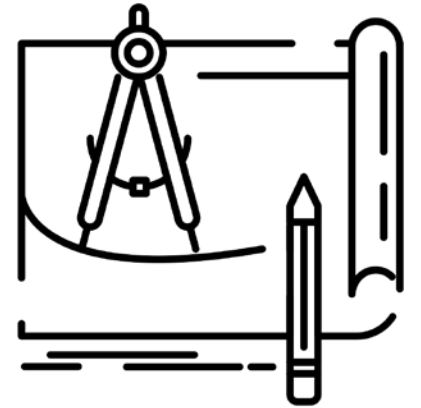
COMMUNITY
ENGAGEMENT



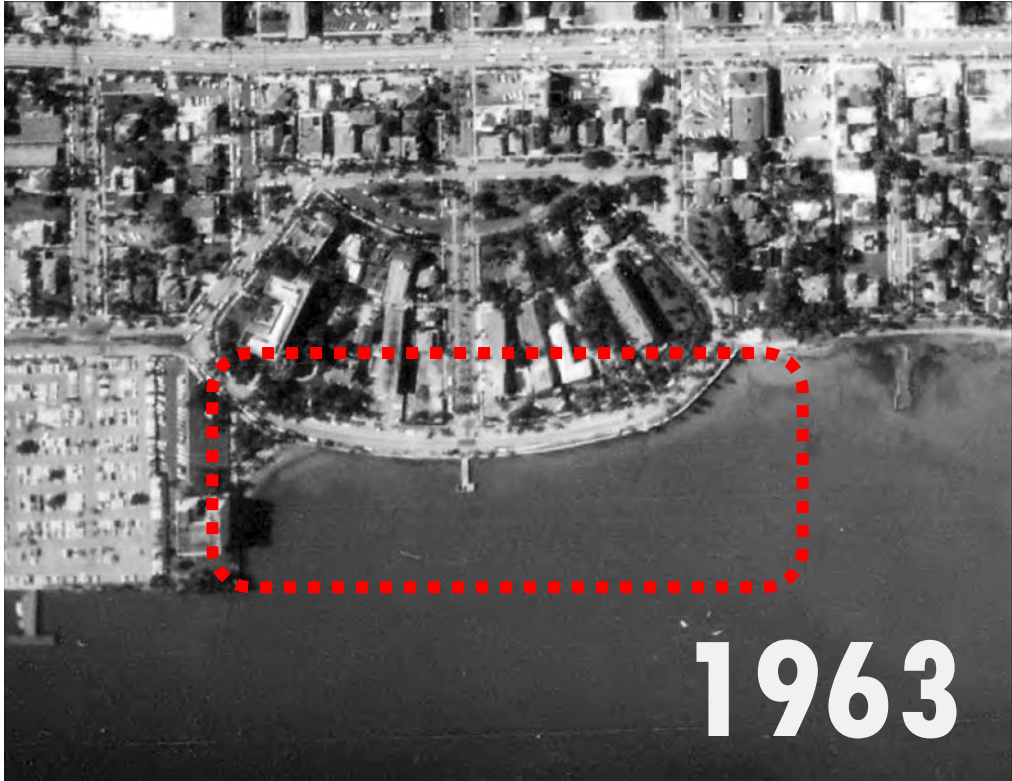
REFINE CURRENT
MASTER PLAN



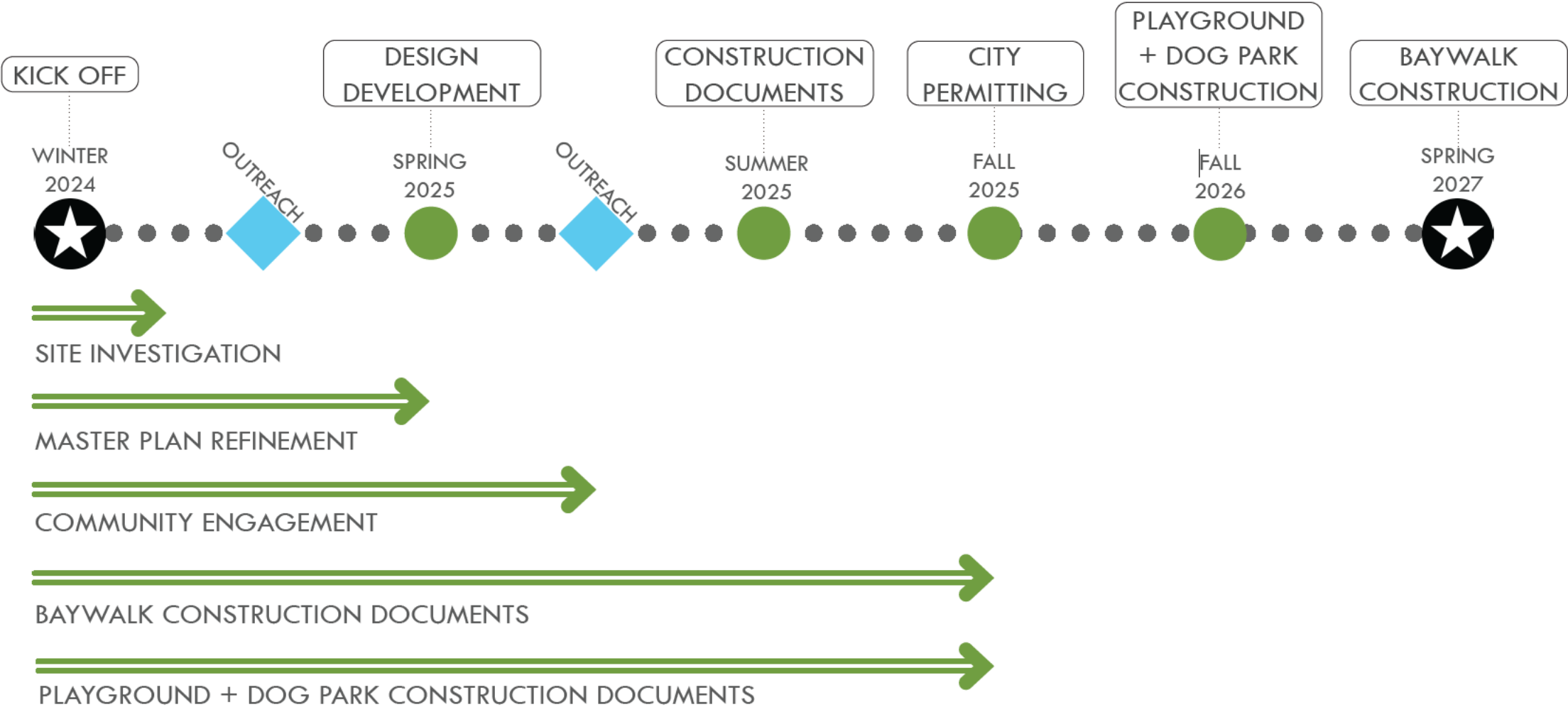
INCORPORATE
RESILIENCE



PREPARE
DOCUMENTATION



TIMELINE



**QUESTIONS?
COMMENTS?**



ENGAGEMENT ACTIVITIES

VISUAL PREFERENCE EXERCISE

PLACE A **GREEN DOT** ON THE SITE ELEMENTS YOU LIKE OR ENJOY, AND A **RED DOT** ON THOSE THAT DON'T APPEAL TO YOU. YOUR INPUT HELPS SHAPE THE FUTURE OF MARGARET PACE PARK!



ENGAGEMENT ACTIVITIES

SITE ELEMENT PRIORITIES

PLACE A **GREEN DOT** ON THE SITE ELEMENTS YOU LIKE OR ENJOY, AND A **RED DOT** ON THOSE THAT DON'T APPEAL TO YOU. YOUR INPUT HELPS SHAPE THE FUTURE OF MARGARET PACE PARK!



ENGAGEMENT ACTIVITIES

EXISTING SITE

MIAMI BAYWALK ZONE = Encompasses an area along the waterfront where public pathways and amenities must be developed to ensure continuous access and connectivity along the shoreline. This zone incorporates strategic grading, lush landscaping, and inviting features such as lighting, seating, and way-finding to create a resilient and vibrant destination for all.

